

M1

SAFETY + MACHINE CARE

WARNING!

- > Read this document completely before using this machine.
- > Due to speed of the thrown ball, a pitching machine can be dangerous if not used with extreme care and caution.
- > Never put any part of your body or any foreign object on/or near any moving parts. Doing so could cause severe injury or death.
- > Inspect machine thoroughly before every use. Do not use if any parts are worn, damaged, or missing. Failure to do so can result in serious injury or death.

CAUTION

- > This machine should be operated with adult supervision ONLY.
- > Always use a grounded 110 Volt electric outlet.
 - < 100 feet - #16/3 extension cord
 - 100 - 200 feet - #14/3 extension cord
 - > 200 feet - #12/3 extension cord or consult a local electrician.
- > Batters & feeders must wear a protective helmet with facemask at all times.
- > Use a protective screen to shield the operator and machine.
- > Keep body parts, clothing and hair away from all moving parts.
- > Never use this machine near water or with damp or wet balls.
- > Always test the pitch location before allowing a hitter to step into the batter's box. This will assure proper alignment of the machine and safe delivery of pitch.
- > Always turn your machine completely off when it is not in use.
- > Manufacturer or seller of this machine assumes no liability for personal injury or property damage caused directly or indirectly by the use of this machine, regardless of reason, whether the machine failed mechanically or whether damage was caused in normal operation of the machine.

WARRANTY

Your machine comes with a **Limited Warranty**.

Under normal use and care ATEC guarantees, to the original owner, the machine to be free from defects in materials and workmanship with the following limitations,

5-years on all structural components.

2-years on all moving and wear components.

During this period ATEC will repair or replace with new or refurbished components, at ATEC's sole discretion, any component found to be defective without cost to the owner, provided the defective product is returned to the factory at the owner's expense. Proof of purchase may be required by ATEC to approve certain warranty claims.

This product is **not intended for commercial use**. Commercial use of this product without the prior written consent of ATEC will void your warranty.

QUESTIONS?

ATEC Customer Service

(p) 1.800.755.5100

(e) askatec@atecsports.com

WARNING: After turning your machine off, the wheel(s) will continue to turn for 2-3 minutes. DO NOT attempt to move the machine until the wheel(s) stop completely. DO NOT attempt to stop the wheel(s) with your hand or any other object.

MAINTENANCE

ATEC training machines require little maintenance, but there are a few actions that will extend the life of your machine.

1. Keep the machine clean. Clean any dust or dirt from all parts of the machine after each use. Use a soft dry cloth and wipe the frame and wheel. **Note: Only clean your machine when it is unplugged and all parts have stopped moving.**
2. Some types of balls may cause a buildup of residue on the wheel's tread. Light buildup will not affect the machine's performance, however you will need to clean the tread if the buildup becomes excessive. To remove residue from the tread: unplug the machine and wait for the wheel to stop. Use 80-grit sandpaper to lightly sand the surface of the wheel's tread.
3. The motor is sealed and requires no lubrication/maintenance.
4. Any maintenance or repair to the motor or electrical components must be performed only by a qualified technician.

GENERAL CARE

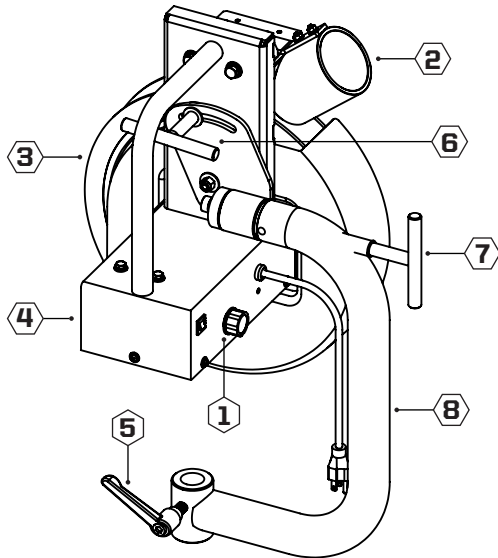
ATEC machine wheels are made of elastometric urethane which maximize ball grip and overall machine performance. This material, by nature, is very pliable. To maintain optimum performance, never store or transport your machine laying on its throwing wheel(s). Also, never store or transport your machine in an environment that exceeds 120°F.



QUICK START + OPERATION

M1

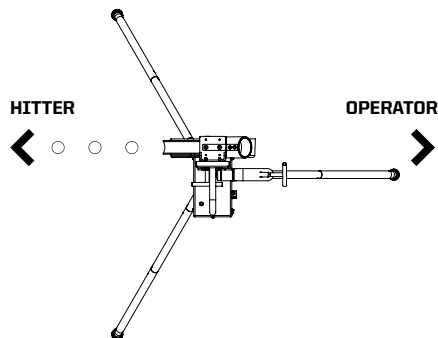
MACHINE DIAGRAM



- 1 - Speed Control
- 2 - Ball Chute
- 3 - Wheel
- 4 - Motor Housing
- 5 - Adjustment Handle (Left + Right)
- 6 - Adjustment Handle (Up + Down)
- 7 - Pitch Type Selection [Tilt]
- 8 - Machine Frame

MACHINE ORIENTATION

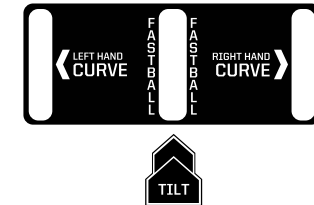
TOP VIEW



GENERAL OPERATION

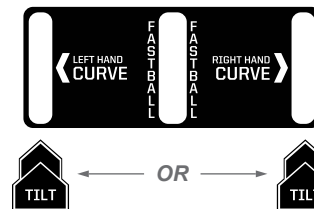
1. Place the machine the desired pitch distance from home plate.
***Recommended machine distance is 40-60 feet**
2. Position the legs so that two are directed toward the plate and one is back, toward the operator (see *Machine Orientation*).
3. Check that the **Speed Control (1)** is set to the off position.
4. Standing behind machine, plug the M1 into a 110 volt power source.
***Use 3-prong plug and a 16 gauge or heavier power cord.**
5. Always use a protective screen for the safety of the operator.
6. Align the machine at the approximate pitch direction using the **Adjustment Handles (5 & 6)** and then tighten the handles to secure the machine's position.
7. Turn the **Speed Control (1)** "on" and set the knob to the desired speed setting. Allow the motor time to reach the proper speed before feeding a ball.
- 8a. Test pitch location by feeding a ball into the **Ball Chute (2)**. Feed multiple balls to confirm pitch location before allowing the batter to step into the box.
- 8b. Make adjustments to machines alignment as needed, and tighten all handles after any adjustments are made. Test pitch location after all adjustments.
9. Always set the speed and type of pitch to a level consistent with the ability and experience of the batter.
10. Always alert the batter verbally or with a routine visual signal and wait for an acknowledgement from the batter prior to pitching the ball.
11. Never mix balls types in a single training session. Mixing brands or types of balls with a different degrees of wear/age will affect the consistency and accuracy of the pitches.
12. When adjusting your machine, always loosen the appropriate **Adjustment Handle (5 & 6)** while the machine is **OFF**, before moving the machine as desired, then tighten.

FASTBALLS



1. Loosen the **Pitch Type Selection Handle (7)** by turning it counter clockwise. This will allow the machine head the freedom to tilt.
2. Tilt the machine's throwing head into position, and align the **Tilt Arrow** with the **Fastball** indicator as shown above.
3. Tighten the **Pitch Type Selection Handle (7)** by turning it clockwise. This will secure the machine's tilt function.
4. Aim the machine and test the pitch location. Continue make adjustments as needed and always test the pitch location before letting a hitter enter the batter's box.

CURVEBALLS



1. Loosen the **Pitch Type Selection Handle (7)** by turning it counter clockwise. This will allow the machine head the freedom to tilt.
2. Tilt the machine's throwing head into position, and align the **Tilt Arrow** with either the **Left Hand Curveball** or **Right Hand Curveball** indicator as shown above.
3. Tighten the **Pitch Type Selection Handle (7)** by turning it clockwise. This will secure the machine's tilt function.
4. Aim the machine and test the pitch location. Continue make adjustments as needed and always test the pitch location before letting a hitter enter the batter's box.